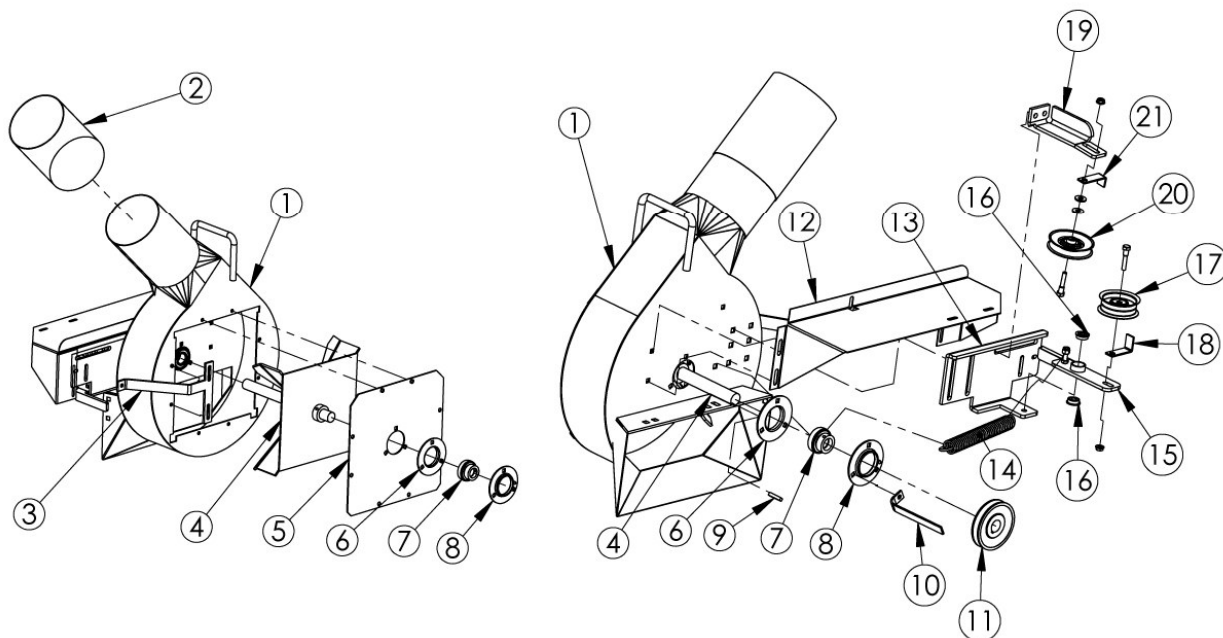


Parts List - Ferris IS2000

PRO VAC Universal Blower

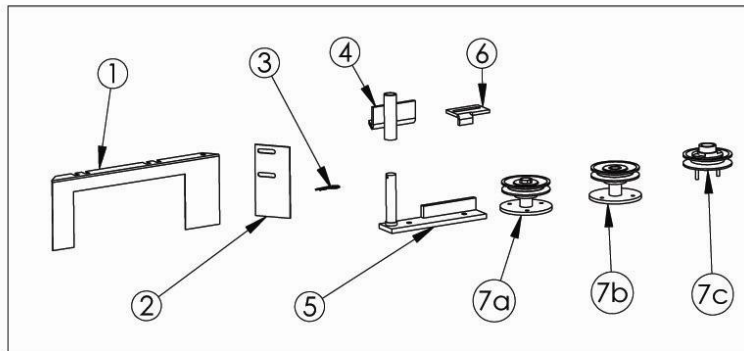
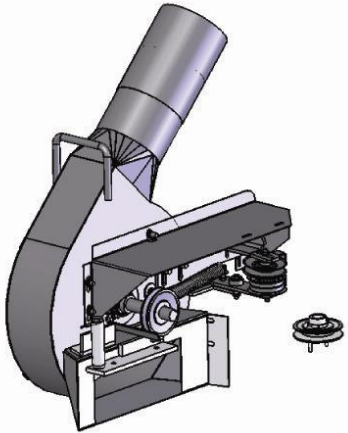


ITEM NO.	PART NUMBER	DESCRIPTION	QTY.
1	002002	Blower Canister Universal	1
2	020305	Blower Sleeve (6")	1
3	002042	Pulley Bracket Support	1
4	002011	Fan	1
5	002084	Blower Cover Plate	1
6	002160	Bearing Flangette	2
7	002150	Fan Bearing w/ Collar	2
8	002162	Bearing Flangette w/ Grease Zerk	2
9	002125	Machinery Key (1/4" x 1")	1
10	002069	Fan Pulley Belt Bracket	1
11	002418	Blower Drive Pulley (3.5")	1
12	002050	Blower Belt Cover	1
13	002040	Blower Pulley Bracket	1
14	002483	Idler Spring	1
15	002033	Idler Arm	1
16	002030	Idler Arm Bearing	2
17	016888	Flat Idler Pulley (3.25")	1
18	017103	Flat Idler Pulley Bracket	1
19	002045	V-Pulley Bracket	1
20	019188	V-Idler Pulley (3.5")	1
21	018104	V-Idler Pulley Bracket	1

Deck Kit

***Notes:**

1. Kit for IS 2000 includes (#1) blocking plate that just spans the top of blower intake.
2. Deck pulley (#7) has set screw type (not “secure type” as pictured below).

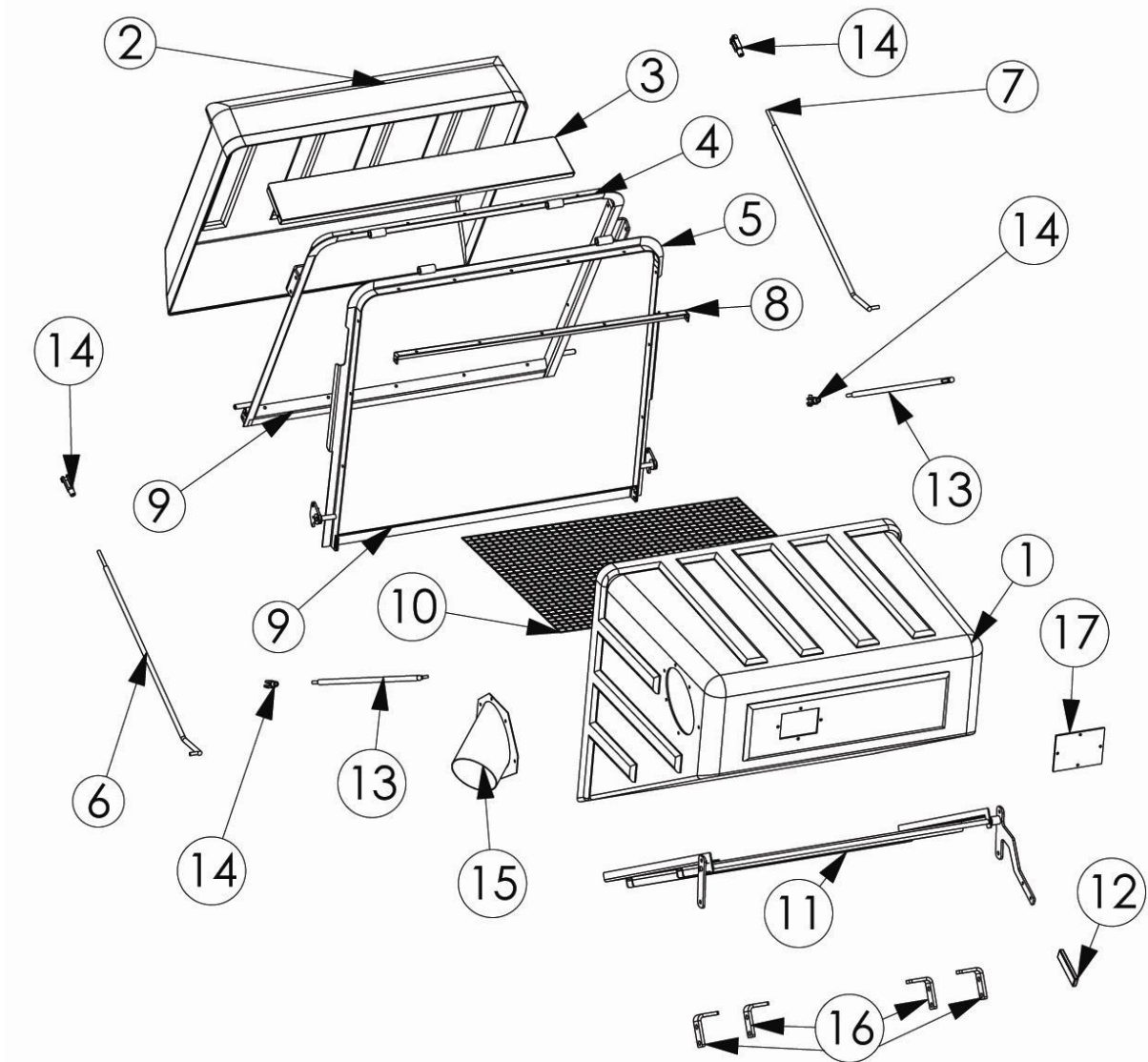


ITEM NO.	PART NUMBER	DESCRIPTION	QTY.
1	003751	Blower Blocking Plate	1
2	003740	Blower Tab	1
3	BP 228	BRIDGE PIN .0930 X 2 ZINC	1
4	003330	Blower Deck Mount	1
5	003720	Blower Support Bracket	1
* 7a	025112	Deck Pulley (5/8" Bore)	1
* 7b	025113	Deck Pulley (3/4" Bore)	1
* 7c	025115	Deck Pulley (Hercules Spindle)	1
8	84580	Belt A56	1

* Deck pulley depends on mower model year and mower deck pulleys

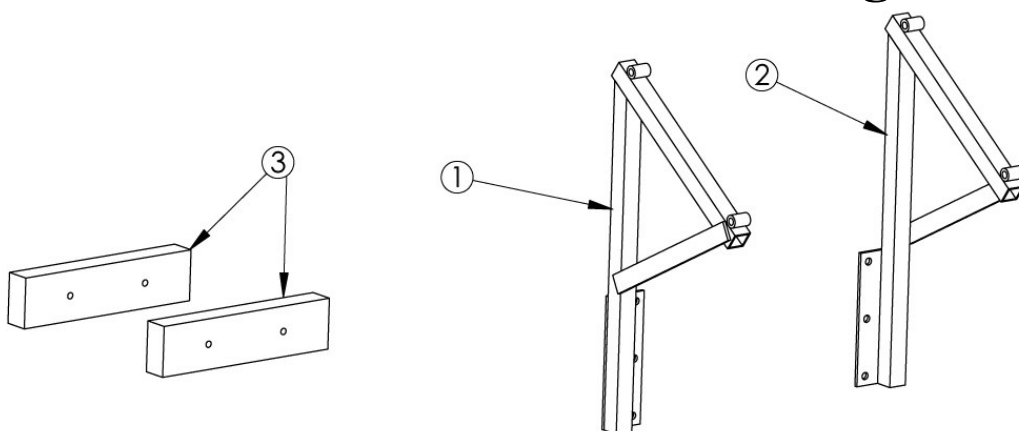
	PART NUMBER	DESCRIPTION	QTY.
Blower Hardware	BOLT HH 38 114	3/8" X 1 1/4" CARRIAGE BOLT	2
	NUT SF 38	3/8" SERRATED FLANGE NUT	6
	WASHER 38	BRIDGE PIN .0930X2 ZINC	2
	BP 228	3/8" X 1" CARRIAGE BOLT	1
	BOLT CAR 516 34	1/4" X 1/2" HEX HEAD BOLT	2
	NUT SF 516	1/4" SERRATED FLANGE NUT	2
	BOLT CAR 38 1	3/8" X 1 1/4" CARRIAGE BOLT	4

Parts List PV 18 CATCHER



ITEM NO.	PART NUMBER	DESCRIPTION	QTY.	ITEM NO.	PART NUMBER	DESCRIPTION	QTY.
1	180003	Catcher Body	1	10	180077	Screen	1
2	180002	Plastic Door	1	11	180020	Dump Lever Assembly	1
3	180044	Door Vent Spacer	1	12	180018	Dump Lever Handle	1
4	180040	Door Frame Opening	1	13	180085	Latch Rod	2
5	180030	Catcher Frame Opening	1	14	180081	3/8" Yoke End	4
6	180091	Hinge Rod Right	1	15	180048	Intake Tube	1
7	180092	Hinge Rod Left	1	16	180049	Base Frame Tab	4
8	180043	Screen Support	1	17	180079	Viewing Window	1
9	180034	Opening Frame Bottom	2				

Catcher Mounts & Counterweight



ITEM NO.	PART NUMBER	DESCRIPTION	QTY.
1	153325	F1500 Left Catcher Mount	1
2	153326	F1500 Right Catcher Mount	1
3	400072	Ferris IS1500Z Weight	2

Note: IS 1500 counterweights shown. IS 2000 counterweight (part # 400075) is installed as shown below:



	PART NUMBER	DESCRIPTION	QTY.
Weight Hardware	NUT NYL 38	3/8" NYLOCK NUT	2
	WASHER 38	3/8" FLAT WASHER	2
	BOLT HH 38 114	3/8" X 1 1/4" HEX HEAD BOLT	2
Catcher Hardware	BP 228	BRIDGE PIN .0930X2 ZINC	4
	CPU 050 2.5	1/2" X 2 1/2" UNIVERSAL CLEVIS PIN	4
Intake Tube Hardware	BOLT PH 14 34	1/4" X 3/4" PAN HEAD BOLT	6
	NUT SF14	1/4" SERRATED FLANGE NUT	6